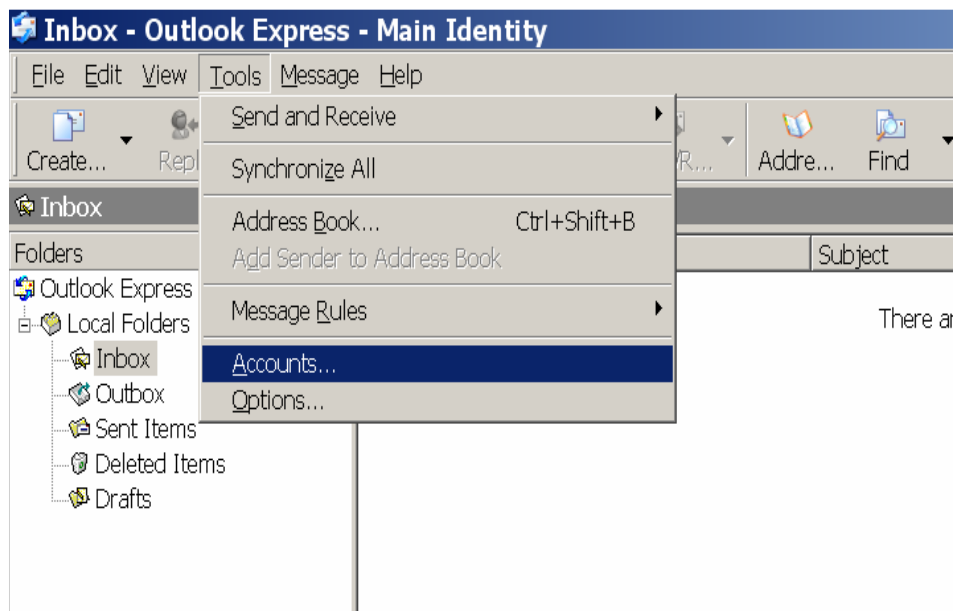
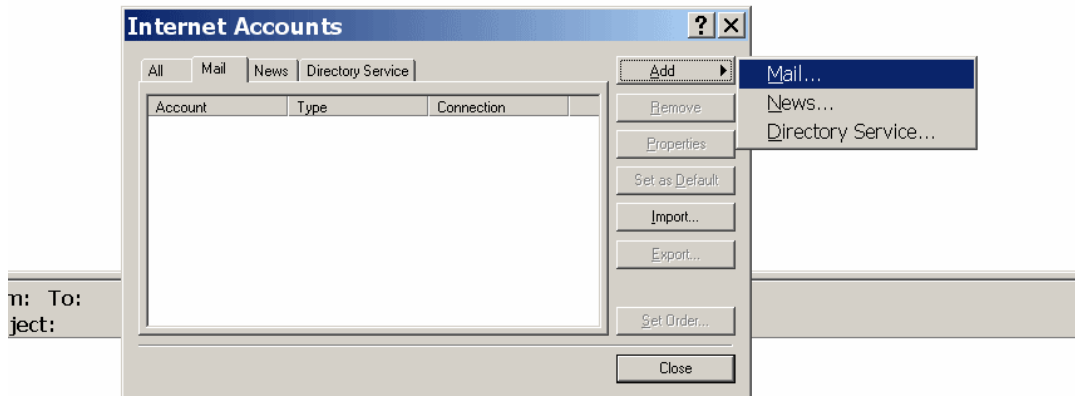


How to setup Outlook Express Email

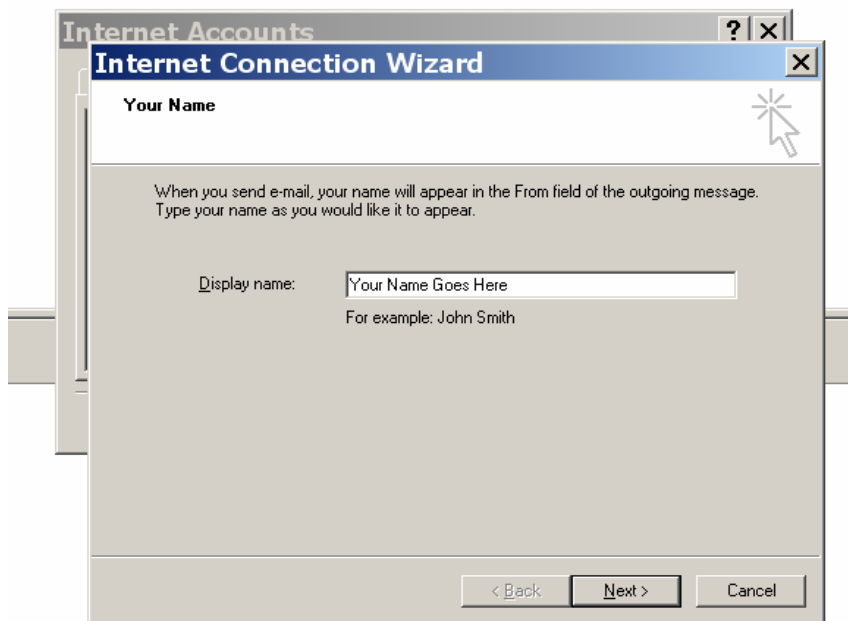
1. Click Outlook Express icon. (Usually located by clicking START then All Programs)
2. On the menubar at the top of the screen, click TOOLS then ACCOUNTS



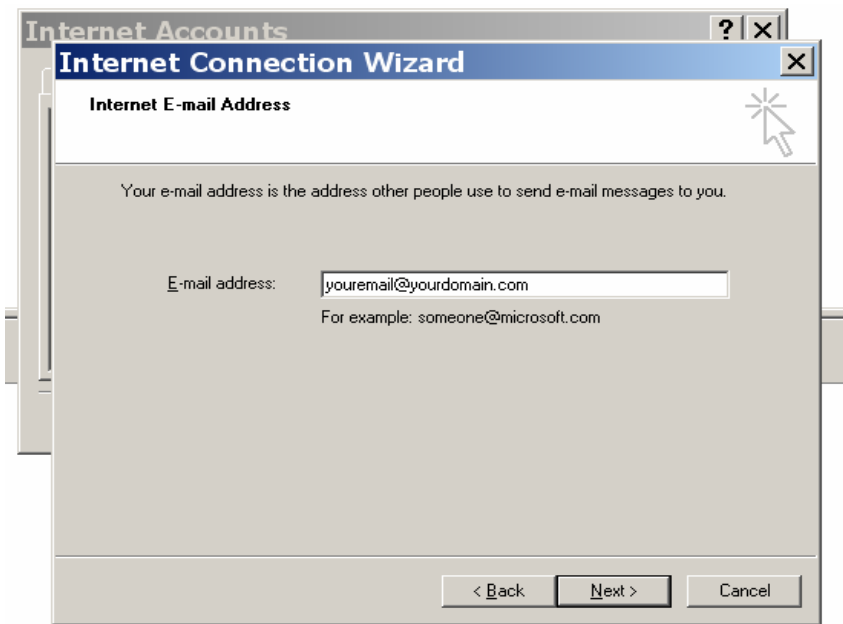
3. Click the MAIL Tab, then MAIL, then ADD



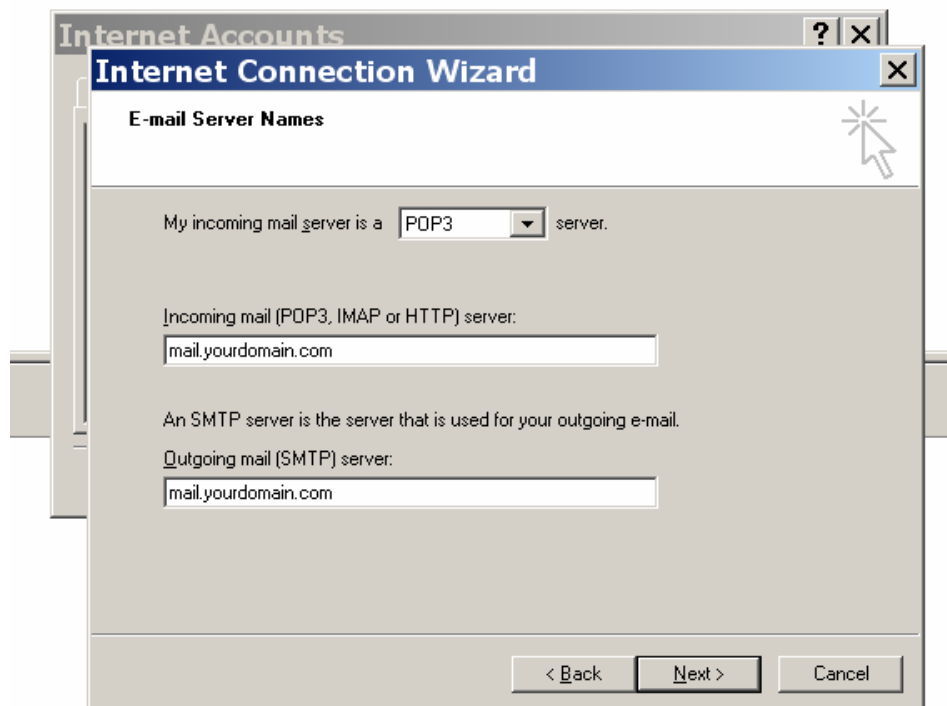
4. The Internet Connection Wizard appears. Type your name the way you want it presented. Example: John Smith
CLICK NEXT



5. Type in your email address. Example: john@smith.com
CLICK NEXT



6. Type in your POP and SMTP mail servers. These will be the same name such as: mail.yourdomain.com, typically. Example: mail.smith.com
CLICK NEXT



7. Account Name should be your FULL email address. Example: john@smith.com. Enter your email password here as well.
CLICK NEXT



8. Click Finish.

9. Final Step:

Click TOOLS, then

ACCOUNTS, then

MAIL tab, then...

Click Email Account you just made so it is highlighted

Click PROPERTIES

Click SERVERS

Click "My Server Requires Authentication"

CLICK APPLY

Click OK

CLICK CLOSE

Your mail is now ready.